

C55

Multifunction | 24 ... 60 V UC | 110 ... 240 V UC | 2 CO



Time data

Timing functions	fig. 1 2: E, A, K, W, H, N, M, B, G, F, Q, I, P 3: E, W, H, B, I, P 4: U, V
Timing range	0.01 s ... 60 d
Timing scale	digital

Main circuit

Number of contacts	2 CO
Contact Material	AgNi
Rated voltage	250 V
Rated current	5 A
Minimum load	10 mA, 12 V
Inrush current	10 A, 10 ms
Rated load DC	fig. 2
Rated load AC-1	1250 VA
Mechanical endurance (cycles)	5 x 10 ⁶
Electrical endurance at rated load AC-1 (cycles)	fig. 3

Control circuit

Nominal voltage	24 ... 60 V UC	110 ... 240 V UC
Operating voltage range	19 ... 75 V	88 ... 265 V
Power consumption AC / DC	2 VA / 2 W	
Typ. input current on command input AC / DC	6.3 / 6.3 mA	4.2 / 4.2 mA
Typ. threshold voltage on command input AC / DC	10 V / 10 V	40 V / 40 V
Rated frequency	48 ... 400 Hz	48 ... 400 Hz

Insulation

Rated test voltage control / main circuit	2 kV rms / 1 min
Rated test voltage main / main circuit	2 kV rms / 1 min
Rated test voltage open contact	1 kV rms / 1 min
Pollution degree	2
Overvoltage category	III

General data

Ambient temperature storage	-40 ... 85 °C
Ambient temperature operation	-25 ... 60 °C
Module width	fig. 4
Weight	80 g
Protection degree	IP 20
Housing material	PC

Product references

Types	Product reference	24-60	110-240
UC supply	C55/UC...V	✓	✓

"..." list control circuit voltage to complete product references.
Other voltages on request. Please contact support@comatreleco.com.

Accessories

Sockets	S3-M
Retaining clip	HF-50
Transparent front cover	FA-50
Front panel mounting set	FZ-50L



fig. 1. Wiring diagram

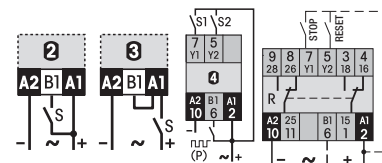


fig. 2. DC load limit curve

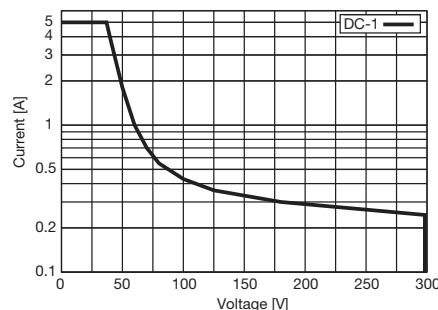


fig. 3. AC voltage endurance

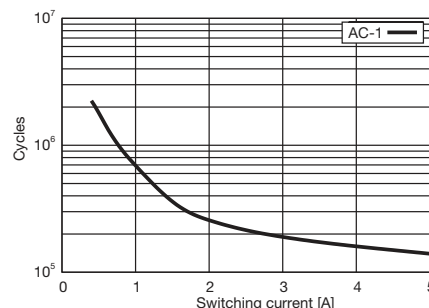
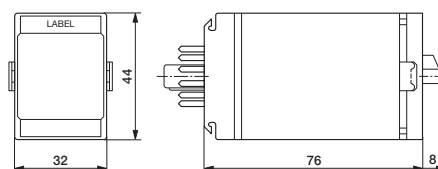


fig. 4. Dimensions (mm)



Standards and approvals

Standards IEC/EN 60947

Approvals

C55.3

Multifunction | 24 ... 60 V UC | 110 ... 240 V UC | 1 Mosfet AC and DC

Time data

Timing functions	fig. 1 2: E, A, K, W, H, N, M, B, G, F, Q, I, P 3: E, W, H, B, I, P 4: U, V
Timing range	0.01 s ... 60 d
Timing scale	digital

Main circuit

Number of outputs	1 NO
Output type	➊ Mosfet AC and DC
Output voltage range	10 ... 265 V
Rated current	0.5 A
Minimum load	1 mA, 10 V
Inrush current	6 A, 2 us
Rated load AC-1	132 VA
Mechanical endurance (cycles)	∞
Electrical endurance at rated load AC-1 (cycles)	∞
Electrical endurance at rated load DC-1 (cycles)	∞

Control circuit

Nominal voltage	24 ... 60 V UC	110 ... 240 V UC
Operating voltage range	19 ... 75 V	88 ... 265 V
Power consumption AC / DC	2 VA / 2 W	
Typ. input current on command input AC / DC	6.3 / 6.3 mA	4.2 / 4.2 mA
Typ. threshold voltage on command input AC / DC	10 V / 10 V	40 V / 40 V
Rated frequency	48 ... 400 Hz	48 ... 400 Hz

Insulation

Rated test voltage control / main circuit	2 kV rms / 1 min
Pollution degree	2
Overvoltage category	III

General data

Ambient temperature storage	-40 ... 85 °C
Ambient temperature operation	-25 ... 60 °C
Module width	fig. 2
Weight	80 g
Protection degree	IP 20
Housing material	PC

Product references

Types	Product reference	24-60	110-240
UC supply	C55.3/UC...V	✓	✓

"..." list control circuit voltage to complete product references.
Other voltages on request. Please contact support@comatreleco.com.

Accessories

Sockets	S3-M
Retaining clip	HF-50
Transparent front cover	FA-50
Front panel mounting set	FZ-50L



fig. 1. Wiring diagram

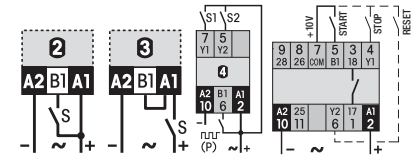
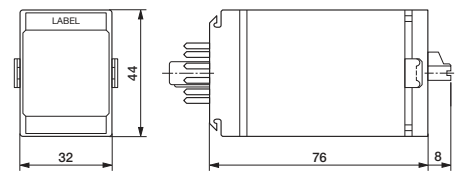


fig. 2. Dimensions (mm)



Standards and approvals

Standards IEC/EN 60947

Approvals

C55.4

Multifunction | 24 V DC | 1 Mosfet



Time data

Timing functions	fig. 1 2: E, A, K, W, H, N, M, B, G, F, Q, I, P 3: E, W, H, B, I, P 4: U, V
Timing range	0.01 s ... 60 d
Timing scale	digital

Main circuit

Number of outputs	1 NO
Output type	⚡ Mosfet
Output voltage range	19 ... 30 V
Rated current	2 A
Minimum load	1 mA, 5 V
Inrush current	40 A, 150 us
Mechanical endurance (cycles)	∞
Electrical endurance at rated load AC-1 (cycles)	∞

Control circuit

Nominal voltage	24 V DC
Operating voltage range	19 ... 30 V
Power consumption AC / DC	- / 300 mW
Typ. input current on command input AC / DC	- / 5.5 mA
Typ. threshold voltage on command input AC / DC	- / 10 V

Insulation

Pollution degree	2
Overvoltage category	III

General data

Ambient temperature storage	-40 ... 85 °C
Ambient temperature operation	-25 ... 60 °C
Module width	fig. 2
Weight	80 g
Protection degree	IP 20
Housing material	PC

Product references

Types	Product reference	24
DC supply	C55.4/DC...V	✓

"..." list control circuit voltage to complete product references.
Other voltages on request. Please contact support@comatreleco.com.

Accessories

Sockets	S3-M
Retaining clip	HF-50
Transparent front cover	FA-50
Front panel mounting set	FZ-50L



fig. 1. Wiring diagram

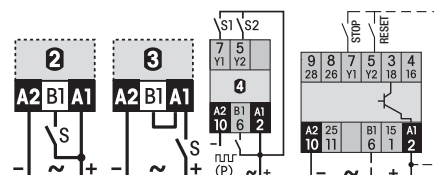
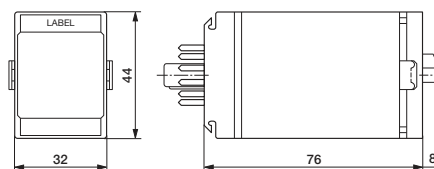


fig. 2. Dimensions (mm)



Standards and approvals

Standards IEC/EN 60947

Approvals

C56

Multifunction | 24 ... 60 V UC | 110 ... 240 V UC | 2 CO | Potential-free control



Time data

Timing functions	fig. 1 6: E, A, K, W, H, N, M, B, G, F, Q, I, P 7: E, W, H, B, I, P 5: U, V
Timing range	0.01 s ... 60 d
Timing scale	digital

Main circuit

Number of contacts	2 CO
Contact Material	AgNi
Rated voltage	250 V
Rated current	5 A
Minimum load	10 mA, 12 V
Inrush current	10 A, 10 ms
Rated load DC	fig. 2
Rated load AC-1	1250 VA
Mechanical endurance (cycles)	5 x 10 ⁶
Electrical endurance at rated load AC-1 (cycles)	fig. 3

Control circuit

Nominal voltage	24 ... 60 V UC 110 ... 240 V UC
Operating voltage range	19 ... 75 V 88 ... 265 V
Power consumption AC / DC	2 VA / 2 W
Typ. input current on command input AC / DC	n.A.
Typ. threshold voltage on command input AC / DC	n.A. (10 V from COM)
Rated frequency	48 ... 400 Hz 48 ... 400 Hz

Insulation

Rated test voltage control / main circuit	2 kV rms / 1 min
Rated test voltage main / main circuit	2 kV rms / 1 min
Rated test voltage open contact	1 kV rms / 1 min
Pollution degree	2
Overvoltage category	III

General data

Ambient temperature storage	-40 ... 85 °C
Ambient temperature operation	-25 ... 60 °C
Module width	fig. 4
Weight	80 g
Protection degree	IP 20
Housing material	PC

Product references

Types	Product reference	24-60	110-240
UC supply	C56/UC...V	✓	✓

"..." list control circuit voltage to complete product references.
Other voltages on request. Please contact support@comatreleco.com.

Accessories

Sockets	S3-M
Retaining clip	HF-50
Transparent front cover	FA-50
Front panel mounting set	FZ-50L



fig. 1. Wiring diagram

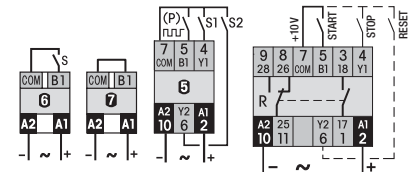


fig. 2. DC load limit curve

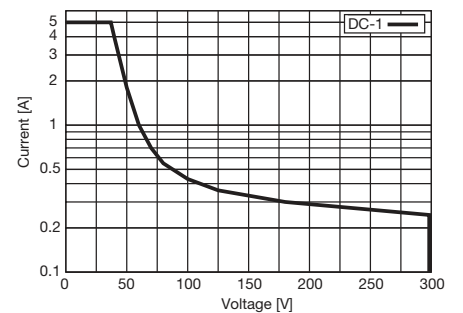


fig. 3. AC voltage endurance

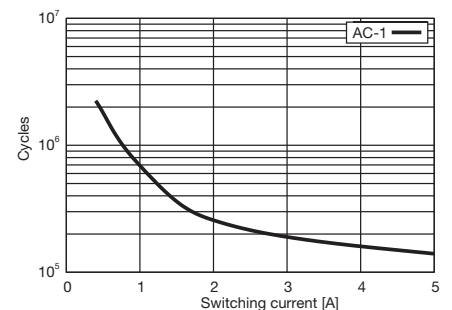
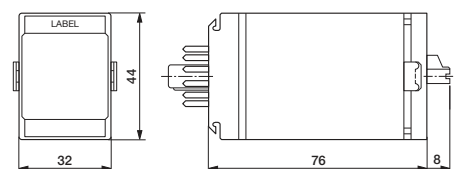


fig. 4. Dimensions (mm)



Standards and approvals

Standards IEC/EN 60947

Approvals

C64

Multifunction | 24 ... 60 V UC | 110 ... 240 V UC | 2 CO | Off delay without control voltage



Time data

Timing functions	A, N
Timing range	0.1 s ... 20 min
Timing scale	1.2 s / 12 s / 120 s / 20 min

Main circuit

Number of contacts	2 CO
Contact Material	AgNi
Rated voltage	250 V
Rated current	5 A
Minimum load	10 mA, 12 V
Inrush current	10 A, 10 ms
Rated load DC	fig. 2
Rated load AC-1	1250 VA
Mechanical endurance (cycles)	5 x 10 ⁶
Electrical endurance at rated load AC-1 (cycles)	fig. 3

Control circuit

Nominal voltage	24 ... 60 V UC	110 ... 240 V UC
Operating voltage range	20 ... 75 V	88 ... 265 V
Power consumption AC / DC	0.9 VA / 0.9 W	1.2 VA / 1.2 W
Rated frequency	48 ... 400 Hz	48 ... 400 Hz

Insulation

Rated test voltage control / main circuit	2 kV rms / 1 min
Rated test voltage main / main circuit	2 kV rms / 1 min
Rated test voltage open contact	1 kV rms / 1 min
Pollution degree	2
Overtoltage category	III

General data

Ambient temperature storage	-40 ... 85 °C
Ambient temperature operation	-25 ... 60 °C
Module width	fig. 4
Weight	75 g
Protection degree	IP 20
Housing material	PC

Product references

Types	Product reference	24-60	110-240
UC supply	C64/UC...V	✓	✓

"..." list control circuit voltage to complete product references.
Other voltages on request. Please contact support@comatreleco.com.

Accessories

Sockets	S3-M
Retaining clip	HF-50
Transparent front cover	FA-50
Front panel mounting set	FZ-50L



fig. 1. Wiring diagram

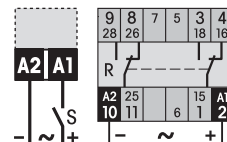


fig. 2. DC load limit curve

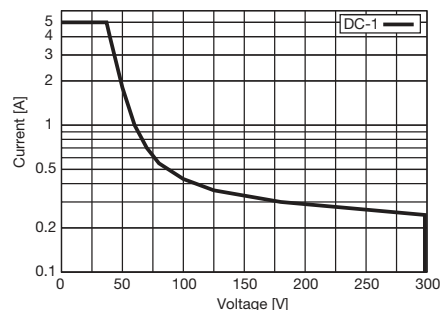


fig. 3. AC voltage endurance

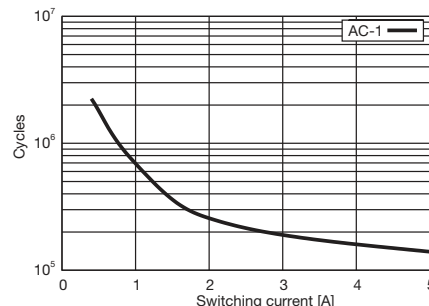
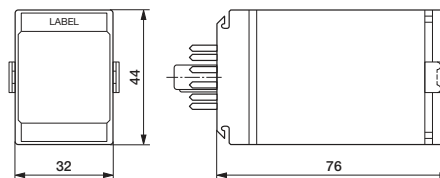


fig. 4. Dimensions (mm)



Standards and approvals

Standards IEC/EN 60947

Approvals **CE EAC**